

# Marine 20

## Barefoot Safety Flooring for Wet Areas

Essential Safety Collection



**Altro Marine™ 20** is specially designed for barefoot safety in wet areas such as swimming pools, shower areas, and locker rooms. It has a textured surface for underfoot comfort and slip resistance. Marine 20 is available in an attractive range of patterned shades to coordinate with wet area design themes.

AltroSan Integrated Bacteriostat - *inhibits growth of microorganisms and MRSA*s  
 Incorporates Altro Easyclean Technology - *for ease of cleaning*  
 Superior Slip Resistance and Comfortable for Bare Feet in Wet Areas  
 Easy to Clean Embossed Surface and Easily Tanked for Showers  
 Low VOC Emissions for Improved Air Quality  
 Contains 10% Post-Consumer Recycled Content  
 May Contribute to or Comply with LEED™ Credits  
 Does not contain DEHP or Phthalates

**Thickness:** 0.08" (2.0mm)  
**Roll Length:** 66' (20m)  
**Width:** 6'7" (2.0m)  
**Weight:** 4.8lbs/yd<sup>2</sup> (2.6kg/m<sup>2</sup>)  
**Warranty:** 10 years  
**Format:** Sheet

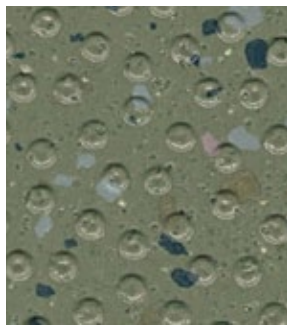


ASTM Standard	(Tested in accordance with ASTM tests)	
ASTM F 970	Static Load Limit	500psi
ASTM D 2047	Slip Resistance	D 0.82 / W 0.77
ASTM E 648	Critical Radiant Flux	>0.66 w/cm <sup>2</sup> Class 1
ASTM E 662	Smoke Generation	<450 Pass
ASTM F 1303/1700	Physical Properties	Pass
ASTM C 501	Taber Abrasion	Pass
CAN/ULC-S102.2	Surface Burning	Tested

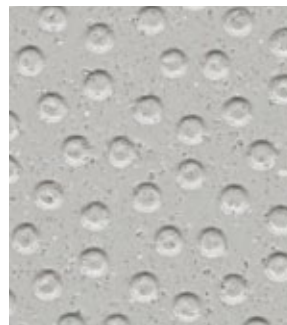
Category	LEED NC&CI Credits	Description Summary
Materials and Resources	4.1 & 4.2	Contains 10% Post-Consumer Recycled Content
Indoor Environmental Air Quality	EQ 4.3    EQ 4.1	Low VOC emitting materials



Cascade IPT20809  
WR: 105 AM: 1



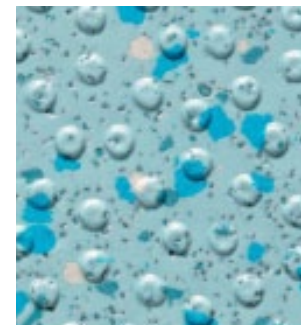
Fen IPT20815  
WR: 242 AM: 242



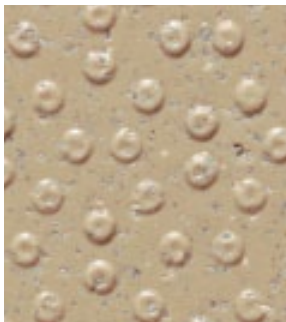
Gull T20813  
WR: 79 AM: 191



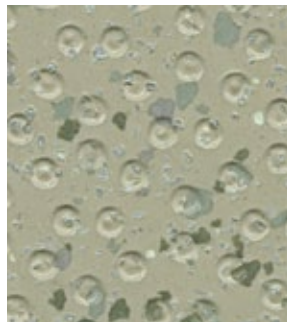
Marlin T20811  
WR: 203 AM: 203



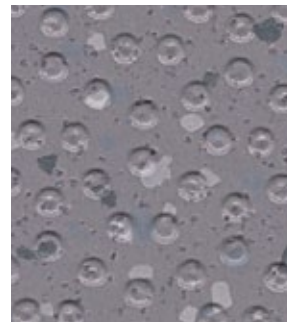
Rainfall IPT20810  
WR: 135 AM: 135



Reef T20801  
WR: 20 AM: 20



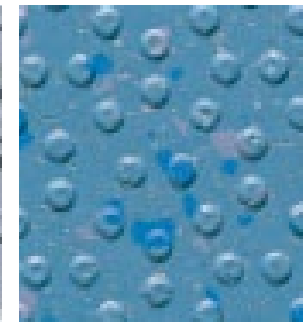
Seagrass IPT20814  
WR: 137 AM: 137



Shark IPT20812  
WR: 201 AM: 84



Steam IPT20807  
WR: 85 AM: 85



Tide IPT20808  
WR: 71 AM: 71