

# Stronghold 30

Safety Flooring for Commercial Kitchen & Food Prep

Essential Safety Collection



**Altro Stronghold 30™** is a heavy-duty slip resistant flooring that is designed to provide extra slip resistance for wet and greasy areas, such as commercial kitchens, dish washing areas, and walk-in coolers. The modified formulation also gives increased levels of underfoot comfort and noise reduction.

AltroSan Integrated Bacteriostat - *inhibits growth of microorganisms and MRSA*

Incorporates Altro Easyclean Technology - *for ease of cleaning*

Superior Slip Resistance and Durability

Excellent Chemical Resistance

Low VOC Emissions for Improved Air Quality

Contains 10% Post-Consumer Recycled Content

May Contribute to or Comply with LEED™ Credits

Does not contain DEHP or Phthalates

**Thickness:** 0.12" (3.0mm)

**Roll Length:** 49' (15m)

**Width:** 6'7" (2.0m)

**Weight:** 6.3lbs/yd<sup>2</sup> (3.4kg/m<sup>2</sup>)

**Warranty:** 10 years

**Format:** Sheet

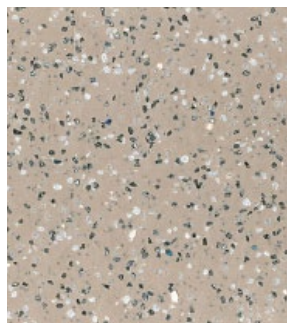


ASTM Standard	<i>(Tested in accordance with ASTM tests)</i>	
ASTM F 970	Static Load Limit	2000psi
ASTM D 2047	Slip Resistance	D 0.92 / W 0.88
ASTM E 648	Critical Radiant Flux	>0.96 w/cm <sup>2</sup> Class 1
ASTM E 662	Smoke Generation	<450 Pass
ASTM F 1303/1700	Physical Properties	Pass
ASTM C 501	Taber Abrasion	Pass
CAN/ULC-S102.2	Surface Burning	Tested

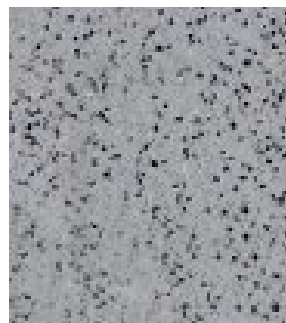
Category	LEED NC&CI Credits	Description Summary
Materials and Resources	4.1 & 4.2	<b>Contains 10% Post-Consumer Recycled Content</b>
Indoor Environmental Air Quality	EQ 4.3    EQ 4.1	Low VOC emitting materials



**Abyss K3001**  
WR: 100    AM: 100



**Biscuit K30907**  
WR: 146    AM: 20



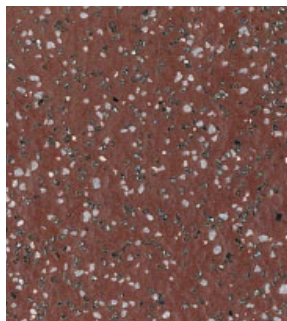
**Dolphin K3010**  
WR: 86    AM: 86



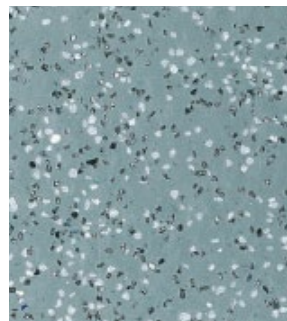
**Lagoon K30910**  
WR: 39    AM: 34



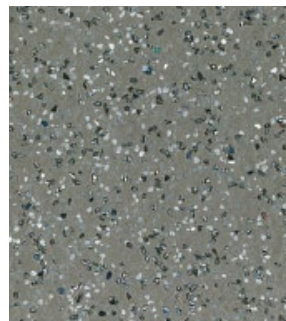
**Midnight K30421**  
WR: 72    AM: 72



**Russet K30262**  
WR: 41    AM: 41



**Skyline K30332**  
WR: 52    AM: 52



**Tundra K30500**  
WR: 153    AM: 239