

Step into a vast world of vivid color, lavish textures, and gleaming metallics with Centiva's Victory Series. Due to the unique manufacturing processes of Coral Reef, Magics, Mineral Chip, and Stria every tile is different. There is never a pattern repeat in this signature product, making it like no other in the industry. These American made products are ideal for the heaviest traffic environments. All Victory Series products may be combined with Centiva's Event and Contour Series.

Victory



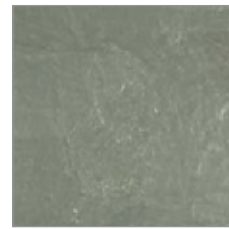
Shown: Victory Series – Coral Reef in Moondance and Arctic



CR 0001-V SS Arctic



CR 0003-V SS Pearl



CR 0053-V SS Sandcastle



CR 0015-V SS Beach Moss



CR 0066-V SS Champagne



MG 8032-V SS Jade



MG 8015-V SS Emerald



MG 8030-V SS Malachite



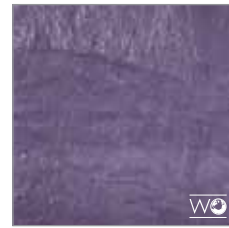
MG 8031-V SS Sapphire



CR 0052-V SS Oyster



CR 0035-V SS Windrift



CR 0039-V SS Bay Grape



CR 0017-V SS Bermuda Sand



CR 0025-V SS Sunset Breeze



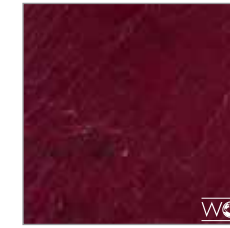
MG 8013-V SS Metallic Blue



MG 8014-V SS Baltic



MG 8012-V SS Auburgine



MG 8011-V SS Cabernet



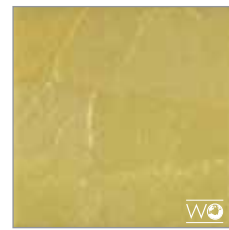
MG 8044-V SS Sunstone **NEW**



CR 0019-V SS Tropicana



CR 0060-V SS Kiwi



CR 0058-V SS Lemon



CR 0057-V SS Mango



CR 0055-V SS Mars Red



MG 8025-V SS Vermeil



MG 8016-V SS Fool's Gold



MG 8029-V SS Citrine



MG 8017-V SS Copper



MG 8042-V SS Jasper **NEW**



CR 0070-V SS Gold Dust **NEW**



CR 0068-V SS Mist **NEW**



CR 0029-V SS Violet Rain



CR 0051-V SS Moondance



CR 0061-V SS Seaspray



MG 8028-V SS Smokey Quartz



MG 8034-V SS Topaz



MG 8010-V SS Florentine Brass



MG 8036-V SS Olivine



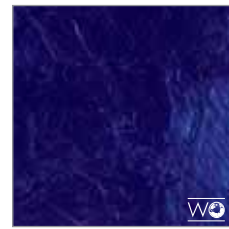
CORAL REEF

Homogeneous

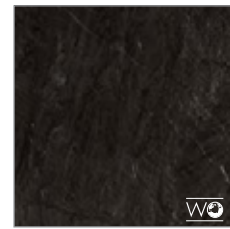
Coral Reef is a homogeneous product made by a hand involved process where no two tiles are the same. This manufacturing process – unique to Centiva – creates a tile with outstanding visual depth by incorporating pearlescent pigment. These award winning products are available in an array of colors.



CR 0063-V SS Ocean Blue



CR 0064-V SS Mystic Sea



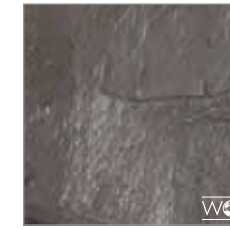
CR 0065-V SS Black Pearl



MG 8018-V SS Silver



MG 8027-V SS Charcoal



MG 8020-V SS Lead

MAGICS

Homogeneous



Found in World Options Series

Magics is one of Centiva's signature products. The traditional manufacturing process used results in a product where no two tiles are alike. Visual depth is created with metallic pigment in this highly durable, homogeneous product.

US SOLIDS CANYON COLORS GLITTER

These products are recommended
in sizes up to and including 18" x 18"

All US Solids may also be
produced as Glitter tile.

See product codes below.

-  GL 5005-V FR
Glitter Yellow
-  GL 0042-V FR
Glitter Orange
-  GL 5037-V FR
Glitter Red
-  GL 0044-V FR
Glitter Kelly
-  GL 0046-V FR
Glitter Lime
-  GL 0061-V FR
Glitter Turquoise
-  GL 5029-V FR
Glitter Royal
-  GL 0062-V FR
Glitter Pink
-  GL 0063-V FR
Glitter Purple
-  GL 0020-V FR
Glitter Navy
-  GL 0040-V FR
Glitter Gray
-  GL 5031-V FR
Glitter Black
-  GL 5001-V FR
Glitter White



US 5005-V FR
Yellow



US 0042-V FR
Orange



US 5037-V FR
Red



US 0044-V FR
Kelly



US 0046-V FR
Lime



US 0061-V FR
Turquoise



US 5029-V FR
Royal



US 0062-V FR
Pink



US 0063-V FR
Purple



US 5001-V FR
White



US 0020-V FR
Navy



US 0040-V FR
Gray



US 5017-V FR
Coin



CA 6308-V FC
Flax



US 5031-V FR
Black



CA 6304-V FC
Smoke



CA 6302-V FC
Chamomile



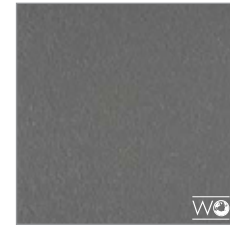
CA 6306-V FC
Durango



CT 9152-V FC
Dark Red



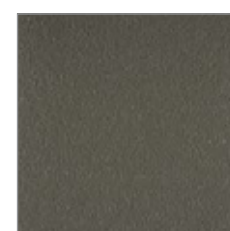
CT 9142-V FC
Dark Iron



CT 9172-V FC
Dark Titanium



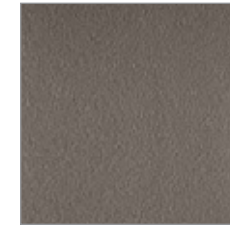
CT 9132-V FC
Dark Blue



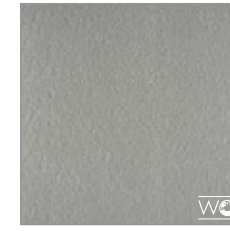
CT 9122-V FC
Dark Green



CT 9110-V FC
Prosecco



CT 9141-V FC
Light Iron



CT 9171-V FC
Light Titanium



CT 9131-V FC
Light Blue

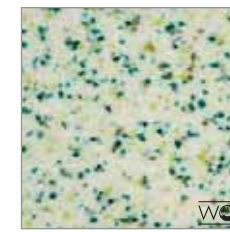


CT 9121-V FC
Light Green

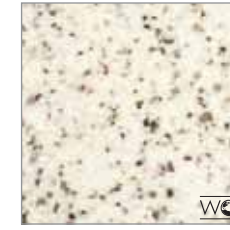


C-TECH

Involving metallic pigments enhances the appearance of any building product. Even though state-of-the-art technology is used, natural shading will occur due to the visual variations of metallic components.



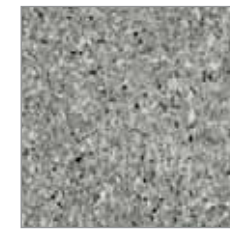
MN 3110-V FR
Paua Green



MN 3112-V FR
Perlite



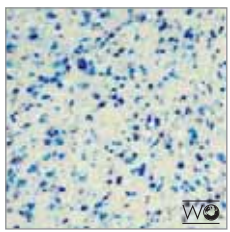
MN 3104-V FR
Howlite



MN 3102-V FR
Aurora



MN 3100-V FR
lolite



MN 3106-V FR
Blue Agate



MN 3108-V FR
Carnelian



MINERAL CHIP

Homogeneous

This product is handcrafted and may vary slightly in chip concentration. The use of a feature strip as seen below is highly recommended.

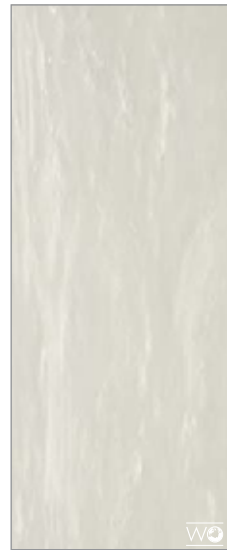
A feature strip may be used when the appearance of a grout effect is desired.



STRIA

Stria is a directional product manufactured using a unique process which results in a product where every tile is different. This product is produced with metallic pigment. Natural shading will occur due to the visual variations of metallic components. Stria not only features the signature look of Centiva, but is constructed with recycled material equaling more than half of the total product.

Found in World Options Series



SA 1001-V SR Shell



SA 1008-V SR Ice



SA 1002-V SR Oasis



SA 1005-V SR Reflection



SA 1003-V SR Bronze



SA 1007-V SR Macadamia



SA 1004-V SR Flame



SA 1006-V SR Shadow

VICTORY SPECIFICATIONS

Create your own product with the Victory Series by choosing styles/colors, textures, and edge treatments.

Characteristics	Standards	Unit	
Floorcovering			Heterogeneous PVC Homogeneous PVC
Colors			100
Total Weight		ft ² = 11 lb	Varies by size
Packaging		ft ² /carton	45 (12" x 12", 12" x 18", 12" x 36", 18" x 18", 18" x 36") 90 (36" x 36")
Performance Classification	ASTM F 1700		Class III Solid Vinyl Tile
Gauge	ASTM F 386	inches / mm	.120 / 3
Wear Layer Thickness	ASTM F 386	inches / mm	Heterogeneous .032 / .80 Homogeneous .120 / 3
Flexibility	ASTM F 137		Good
Dimensional Stability	ASTM 2199		Good
Residual Indentation	ASTM F 970 ASTM F 1914		Excellent
Flammability	ASTM E 648		Class I CRF>0.45
Slip Resistance	ASTM C 1028* ASTM D 2047 ADA Compliant		Very Good (*textures) Passes FTC Slip Resistant Classified Product
Smoke Density	ASTM E 662		<450; Good
Abrasion	ASTM D 3884		Excellent
Castor Chair Suitability	ITTS 205		Very Good
Color Fastness	ASTM F 1515		Very Good
Chemical Resistance	ASTM F 925		Excellent

Surface Textures: Standard surface textures for Victory products are indicated in this brochure. These textures have been specifically chosen to complement the products. See the key below for additional surface textures.

Victory Surface Texture Key:

- Coral Reef/Magics
 - JS = Granite
 - SS = Slate (recommended)
- Mineral Chip
 - FR = Frost (recommended)
 - JS = Granite
 - SS = Slate
- Canyon Colors/Glitter/US Solids/C-Tech
 - FC = Fresco
 - FR = Frost
 - PH = Pathway
 - QU = Quarry

Sampling/Color: Samples are cut from standard tiles and therefore may not correspond exactly to the pattern of the entire tile. Samples may vary slightly from actual production runs. For critical color match, please check actual production runs. Chainsets are available upon request. Colors shown in brochures are only as accurate as four color printing process will allow. Images shown in printed material are not to scale.

Decorative Options: All Centiva products can be supplied as Feature Strips and Keystones. Complete information can be found within the Centiva Floor Design section at www.centiva.com.

Choose Edge Treatment: Square Edge (SE) or Slight Bevel (SB). Homogeneous are also available in Deep Bevel (DB). Unless specified otherwise, products will be produced in the standard Square Edge (SE) treatment.

Direction: The Victory Series homogeneous products including Coral Reef, Magics, and Mineral Chip are non-directional and should be pre-blended before installation begins. The Victory Series multi-layered products including Canyon Colors, C-Tech, Glitter, and US Solids are to be installed with one-quarter turn (tessellated) or in one direction.

Centiva also meets the equivalent characteristics of the European CE-Testing Standards.

Warranty: Centiva provides a Commercial 20 year Limited Wear Warranty and a Residential Lifetime Limited Wear Warranty on all products. For complete warranty, installation, and maintenance information, please visit www.centiva.com.

Cent-Tough™ is an advanced production technology that ensures a product will have a superior level of scuff resistance.

PRODUCT SIZE CHART Standard Optional

	(12" x 12")	(12" x 18")	(12" x 36")	(18" x 18")	(18" x 36")	(36" x 36")
Coral Reef/Magics	✓	✓	✓	<input checked="" type="checkbox"/>	✓	✓
C-Tech	<input checked="" type="checkbox"/>	✓	✓	✓		
Canyon/Glitter/US Solids	<input checked="" type="checkbox"/>	✓	✓	✓		
Mineral Chip	✓	✓	✓	<input checked="" type="checkbox"/>	✓	✓
Stria	✓	✓	<input checked="" type="checkbox"/>	✓		

VICTORY STRIA





Worldwide we know that industrial production must turn from its old ways. All companies must change and improve their methods and products in an environmentally conscious way. **The Centiva Green Way®** initiative was launched to meet those challenges.

We design and manufacture internationally recognized flooring products in a world class manner. That vision is only made complete with our commitment to the environment.

Why Centiva?

- Low VOCs – Centiva products are FloorScore® Certified and adhesives are GREENGUARD Certified
- Contains product specific pre- and post-consumer content
- Reclamation Program – Give your old floor a new life
- 100% Recyclable with zero production waste
- Can contribute to LEED® Credits
- Made in the USA (Contour & Victory)
- Durability is a top consideration of architects and designers when considering the green aspects of flooring
- Maintenance – Centiva requires significantly less maintenance than other flooring products



Search, evaluate, and document the environmental aspects of Centiva's products with our ecoScorecard site. Learn how Centiva can contribute to LEED® credits.

'Member' and related logo is a trademark owned by the U.S. Green Building Council and is used by permission.



email: info@centiva.com

www.centiva.com

International Floors of America, Inc.

1701 Mars Hill Road • Florence, AL 35630 USA

Ph: 256-767-4990 • 1-888-CENTIVA • Fax: 256-760-1763