

WALKWAY 20

Multi-Purpose Safety Flooring



APPLICATIONS

An attractive and economical slip resistant safety floor available in a wide range of colors to facilitate creative floor designs, and is ideal for many applications.

PRODUCT BENEFITS

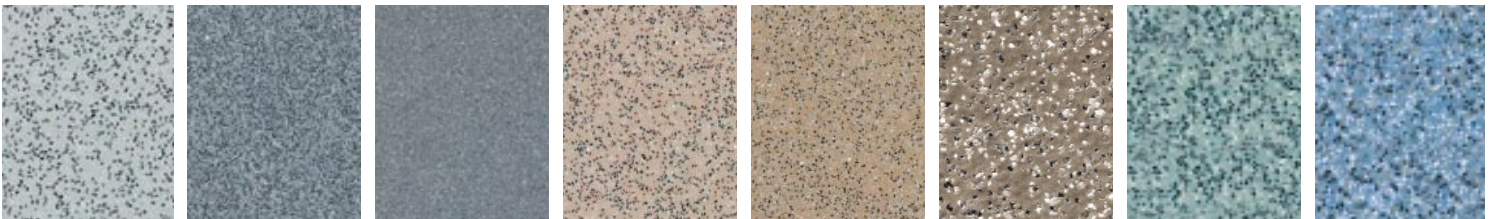
Meets Requirements of the CA 01350 Test Standard for Low Emitting Flooring
 May Contribute to or Comply with LEED™ Credits
 Contains 20% Recycled Content - 10% Post-Consumer and 10% Pre-Consumer

Thickness: 0.08" (2.0mm)
 Roll Length: 66' (20m)
 Width: 6'7" (2.0m)
 Weight: 4.8lbs/ycd² (2.6kg/m²)
 Format: Sheet

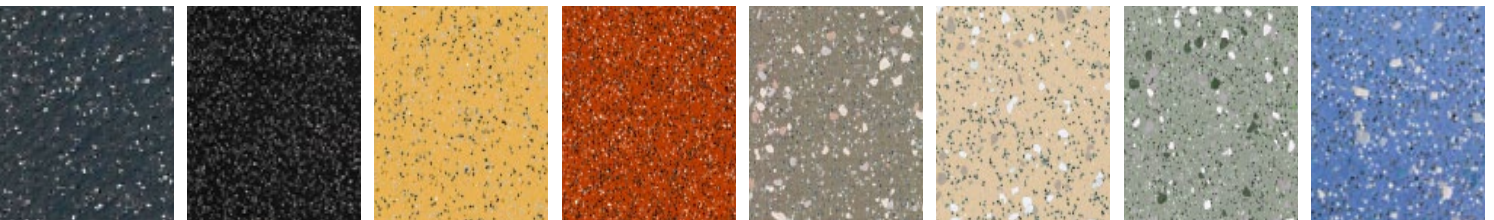


ASTM Standard	<i>(Tested in accordance with ASTM tests)</i>	
ASTM F 970	Static Load Limit	500psi
ASTM D 2047	Slip Resistance	0.80
ASTM E 648	Critical Radiant Flux	Pass
ASTM E 662	Smoke Generation	Pass
ASTM F 1303/1700	Physical Properties	Pass
ASTM C 501	Taber Abrasion	Pass
ASTM D 1203	Volatile Loss	Pass
CAN/ULC-S102.2	Surface Burning	Pass

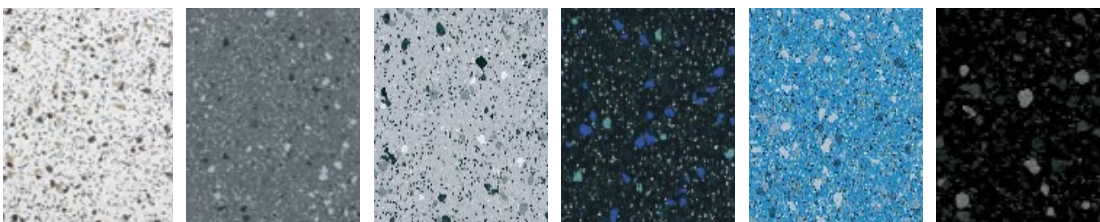
Category	LEED NC&CI Credits	Description Summary
Materials and Resources	4.1 & 4.2	20% Recycled Content 10% Post-Consumer 10% Pre-Consumer
Indoor Environmental Air Quality	EQ 4.3 EQ 4.1	Low VOC emitting materials



Cloud VM2014 WR79 AM191 Fog VM20153 WR81 AM81 Dolphin VM2010 WR86 AM86 Bone VM20215 WR20 AM20 Biscuit VM20907 WR146 AM20 Tundra VM20910 WR153 AM239 Skyline VM20332 WR52 AM52 Blue VM20412 WR71 AM71



Midnight VM20421 WR72 AM72 Black VM20892 WR100 AM100 Canary VM2030 WR247 AM247 Tango VM2031 WR42 AM42 Savannah VMI2050 WR153 AM239 Sand VMI2051 WR20 AM20 Tarragon VMI2052 WR52 AM52 Lupin VMI2059 WR286 AM286



Winter VMI2053 WR105 AM1 Whale VMI2054 WR86 AM86 Blizzard VMI2055 WR79 AM191 Nightfall VMI2056 WR72 AM72 River VMI2057 WR71 AM71 Coal VMI2058 WR100 AM100